



**F** FALLTECH<sup>®</sup>  
Fall Protection. Precision Engineered.

**CANADIAN  
SUPPLEMENT TO  
FULL LINE CATALOGUE**

# ABOUT FALLTECH®

Established in 1991, FallTech® began manufacturing only essential personal fall arrest components for select channel partners. During the next decade while demand grew and regulations were added, FallTech® increasingly expanded into many additional fall arrest solutions. Throughout this time, controlling and maintaining our in-house design, testing, manufacturing and sourcing processes became the foundational structure we continue to uphold today from our operations in Compton CA.

Fall Protection safety is more than a job for us – it's our purpose and our enterprise. Our ISO 17025 accredited test lab ensures FallTech® products meet or exceed ANSI and CSA standards and OSHA regulations and always deliver uncompromised performance and resolute quality for our users even in their most demanding conditions.

28 years on from the basic provision of body belts and lanyards, the standards have changed and some regulations shifted but our commitment to your safety has not hesitated.



# CONTENTS

---

## Anchorage

I-Beam, Specialty Application, Steel, Concrete, Roofing, and Multi-application.

5 - 9

---

## Body Wear

Advanced ComforTech GEL, Journeyman Flex, Tradesman Plus, Contractor Plus, and WeldTech.

11 - 15

---

## Connectors

Energy Absorbing Lanyards, Vertical Lifelines, Fall Arresters, Extenders and Carabiners.

17 - 20

---

## Devices

Overhead, Leading Edge and Personal SRLs.

23 - 26

---



**SOLUTIONS  
FOR THE MOST  
CHALLENGING JOBS**

**7538** | Trailing Beam Clamp

Temporary



Trailing beam anchor features dual-clamp adjustment with aluminum crossbar and jaws, swiveling D-ring and bronze slider pads. Fits 3" to 14½" wide beam flanges up to 1½" thick for temporary and mobile use on horizontal I-beams. Complies with ANSI Z359.18-2017 and OSHA 1926.502

**7531** | Trailing Beam Clamp

Temporary



Trailing beam anchor features single-clamp adjustment with aluminum crossbar and steel jaws with nylon slider pads and concealed adjustment latch. Plated steel D-ring slides with adjustment and fits 3" to 14½" wide beam flanges up to 1¼" thick for temporary and mobile use horizontal I-beams. Complies with ANSI Z359.18-2017 and OSHA 1926.502

**7535** | Vertical Beam Clamp

Permanent



Vertical beam anchor features single-jaw adjustment with aluminum crossbar and jaws. Threaded crossbar and knurled rings provide fine adjustment for fitting 3¾" to 12¾" wide beam flanges up to 2¼" thick for permanent installation on vertical and horizontal I-beams. Complies with ANSI Z359.18-2017 and OSHA 1926.502

**74942** | Overhead Drop-through

Temporary



2' Overhead Drop-through anchor features ¼" vinyl coated galvanized steel cable with 1" swiveling connection eye and 6" x 6" steel plate that suspends cable through 1" min to 3" max hole diameter. For temporary and reusable installation through overhead holes in steel and concrete. Complies with ANSI Z359.18-2017 and OSHA 1926.502

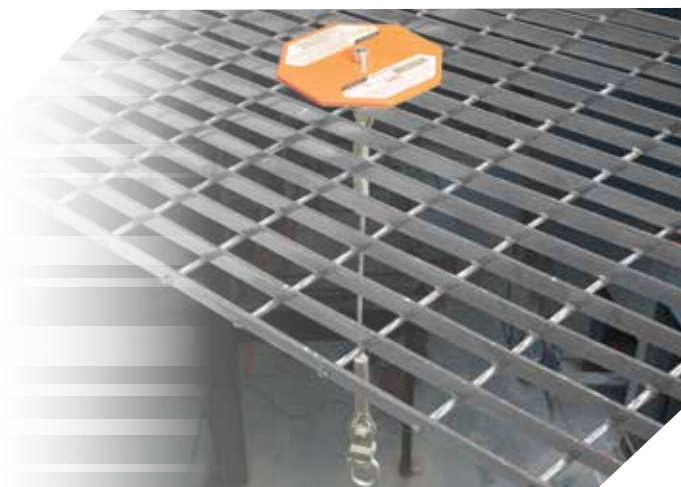
**74946:** 6' Drop-through Anchor.  
**749485:** 8½' Drop-through Anchor.

**7495A** | Rail Anchor

Temporary



Rail anchor is designed for temporary and reusable installations onto existing train rail. Fits rail sizes from 112 lbs. to 141 lbs. (approx. 2½" to 3") Meets OSHA 1926.502 Regulations



## STEEL // ANCHORAGES

**7414P** | Weld/Bolt-on D-ring Plate

Permanent



Weld and Bolt-on D-ring features 2" x 4½" unplated steel anchoring plate and plated steel D-ring with ½" bolt holes; unplated anchoring plate is ideal for permanent weld-on installation. Complies with ANSI Z359.18-2017 and OSHA 1926.502

**7414:** Bolt-on anchor with zinc plated anchoring plate.  
**7414SS:** Anchor with stainless steel anchoring plate.

**7408** | Toggle-through Eyebolt

Temporary



Toggle-through moveable eyebolt anchor installs to ¼" max steel substrate thickness and fits hole sizes from 13/16" min to 1¼" max for temporary and reusable installation in steel structures. Meets OSHA 1926.502 Regulations

**7393W** | Rotating Weld-On D-Ring

Permanent



Weld-on D-ring rotates 360° and pivots 180°, features 10,000 lbs. static strength and includes bolt and weld-on puck for permanent installation. Meets OSHA 1926.502 Regulations

**7393P:** Weld-on puck with bolt for 7393 anchor.

**7435** | Bolt-on D-ring

Permanent



Bolt-on D-ring features large 2¼" x 3¼" internal dimension and integral threaded stud and Grade 8 nut for permanent installation to 7/8" max steel substrate thickness. Complies with ANSI Z359.18-2017 and OSHA 1926.502

**7393S** | Rotating Bolt-on D-Ring

Permanent



Bolt-on D-ring rotates 360° and pivots 180°, features 10,000 lbs. static strength and includes Grade 8 bolt and nut for permanent installation. Meets OSHA 1926.502 Regulations

**7393:** Rotating bolt-on anchor without bolt and nut.



**7440S** | Swivel-eye Expansion Wedge

Temporary



Swivel-eye expansion wedge anchor features 5,000 lbs. static strength, requires 3½" min hole depth and allows 3/4" max hole diameter for temporary use in cured concrete. Meets OSHA 1926.502 Regulations

**7440:** Concrete anchor with swaged-eye connecting loop.

**7451A** | Rotating D-ring with Concrete Screw

Temporary



Rotating D-ring anchor with concrete screw features plated stainless steel anchoring plate with alloy steel connecting D-ring. Precision-cut bushing provides 360° D-ring rotation for temporary or permanent installation in cured concrete. Meets OSHA 1926.502 Regulations

**7451A1** | Thread-cutting Concrete Screw

Concrete



5/8" x 5½" thread-cutting concrete screw for concrete installation with Rotating D-ring Anchor available in single and multi-pack quantities.

**7451A5:** 5-pack thread-cutting screw.  
**7451A10:** 10-pack thread-cutting screw.

**7448L50** | Pour-in-place Embed with Loop

Temporary

50-pack



48" pour-in-place embed with connection loop and jacketed web, for loop-over or choke-on installation to embedded rebar during concrete pour. Remove and dispose after temporary use in cured concrete. Meets OSHA 1926.502 Regulations

**7448L:** 4' embed anchor with connecting loop 1/pack.

**7451C** | Rotating D-ring with Expansion Bolt

Temporary



Rotating D-ring anchor with torque-indicating expansion bolt features plated stainless steel anchoring plate with alloy steel connecting D-ring. Precision-cut bushing provides 360° D-ring rotation for temporary or permanent installation in cured concrete. Meets OSHA 1926.502 Regulations

**7451C1** | Torque-indicating Expansion Bolt

Concrete



0.7" x 4½" torque-indicating expansion bolt for concrete installation with Rotating D-ring Anchor available in single and multi-pack quantities.

**7451C5:** 5-pack torque-indicating expansion bolt.  
**7451C10:** 10-pack torque-indicating expansion bolt.

## ROOFING // ANCHORAGES

**7431** | Roof Ridge Twin-D

Permanent



Twin-D under ridge cap anchor features 12" stainless steel nailing plate with 2 1/4" connecting D-rings. Includes 16D stainless steel nails for permanent roof ridge installation on wood roof structures. Meets OSHA 1926.502 Regulations

**7434** | Under-tile Single-D

Permanent



Single-D under-tile anchor features 17" stainless steel nailing plate with 2" connecting D-ring. Includes 16D stainless steel nails for permanent roof ridge or field installation on wood roof structures. Meets OSHA 1926.502 Regulations

**7434S:** 8" Single-D permanent roof anchor.

**7410** | Hinged Reusable

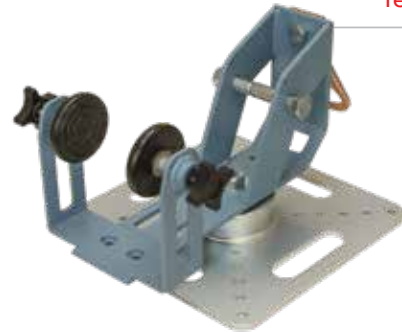
Temporary



Reusable roof anchor features hinged design, 10" x 3" anchoring plates and 2 1/4" connecting D-ring for temporary reusable installation on wood structures. Includes 16D nails for roof ridge or field installation. Meets OSHA 1926.502 Regulations

**7395A** | Adjustable Rotating SRL Anchor

Temporary



Rotating SRL anchor features adjustable cradle for DuraTech® and most SRL brands up to 60'. Includes 2 1/2" lag and sheet metal screws for wood and metal roof structures and steel deck installation. For temporary and reusable applications on flat and low-slope wood and steel roofing and decking. Meets OSHA 1926.502 Regulations

**7493B1** | D-ring Plate

Temporary



Reusable D-ring plate anchor features 9" x 3" anchoring plate and 2 1/4" connecting D-ring for temporary reusable installation on wood roof structures. Includes 3" Grade 5 lag screws for roof ridge or field installation. Meets OSHA 1926.502 Regulations

**7493A** | Chain O-Ring

Temporary



Reusable chain anchor features 9" x 3" anchoring plates and 5/16" Grade 80 chain with connecting O-ring for temporary reusable installation on wood roof structures. Includes 16D nails for roof ridge or field installation and, 2 1/2" lag screws for use with HLLs. Meets OSHA 1926.502 Regulations



**C7336** | Pass-through Web Choker

Temporary



3' pass-through web choker anchor with 1 3/4" load-bearing web and 3" wide wear pad for temporary reusable applications on properly rated structures. Large and medium size D-rings allow simple pass-through choke-on installation leaving smaller D-ring as connection point for lanyards or SRLs. All pass-through choker anchors shown are certified to CSA Z259.15-2017

- C7348:** 4' Pass-through Web Choker.
- C7372:** 6' Pass-through Web Choker.
- C7373:** 12' Pass-through Web Choker.

**7214** | Scaffold Choker

Temporary



17" cinch-loop scaffold choker anchor features 1" polyester web with connection D-ring for temporary reusable choke-on installation to properly rated structures. Manageable length is ideal for short-reach applications common with scaffolds and towers. Scaffold choker anchor shown is certified to CSA Z259.15-2017 and ANSI Z359.18-2017

**722448** | Cinch-loop Web Choker

Temporary



4' cinch-loop web choker anchor features 1 3/4" heavy weight polyester web with connection D-ring for temporary reusable installation on properly rated structures. Familiar cinch-loop design provides easy choke-on attachment. All cinch-loop choker anchors shown are certified to CSA Z259.15-2017 and ANSI Z359.18-2017

- 7224:** 2' Cinch-loop web choker.
- 7236:** 3' Cinch-loop web choker.
- 7272:** 6' Cinch-loop web choker.





AS DIVERSE AS  
**THE PEOPLE**  
WHO WEAR THEM

## Advanced ComforTech® Gel

The evolution of comfort continues with exclusive premium features including our proprietary endoskeleton Gel-infused waist, shoulder and leg pads for superior user-comfort, exclusive aluminum camlock torso adjusters providing simple one-handed operation, integrated dorsal SRL sleeve for easy personal SRL attachment, built-in tool tether rings afford a practical solution for tether attachment, lightweight forged aluminum D-rings for less overall harness weight and on-board Suspension Trauma Relief System. All Advanced ComforTech® harnesses shown are certified to CSA Z259.10-2018 Class A or Class A, P and ANSI Z359.11.2014

### 7080B | Standard Non-Belted

#### Single D-Ring

Sizes S to XL



Includes Suspension Trauma Relief System

### 7081B | Construction Belted

#### Three D-rings

Sizes S to XL



Includes Suspension Trauma Relief System

### 7083B | Construction Belted

#### Three D-Rings

Sizes S to 2X



Includes Suspension Trauma Relief System

Item #	Sizes	Type	D-rings	Legs	Chest	Torso	Applications
7080B	S, M, L, XL	Standard Non-Belted	Dorsal	Tongue Buckle	Quick Connect Buckle	Aluminum Camlock	Fall Arrest
7081B	S, M, L, XL	Construction Belted	Dorsal, Hip	Tongue Buckle	Quick Connect Buckle	Aluminum Camlock	Fall Arrest, Work Positioning
7083B	S, M, L, XL, 2X	Construction Belted	Dorsal, Hip	Quick Connect Buckle	Quick Connect Buckle	Aluminum Camlock	Fall Arrest, Work Positioning

## Journeyman Flex

Journeyman FLEX harnesses are the enduring workhorse body wear solution with unmatched reliability and value for every job and application end-users demand. Durable functionality is achieved through standard features including our integrated dorsal SRL attachment sleeve, exclusive aluminum camlock torso adjusters, Visi-lock Quick-Connect buckles with visual indicator for positive closure, options with steel and aluminum D-rings, ergonomic and reinforced waist pad and contoured hip-to-seat leg pads. All Journeyman Flex harnesses shown are certified to CSA Z259.10-2018 Class A, Class A, P or Class A, E and ANSI Z359.11-2014

### 7035B | Construction Belted



Three D-rings

Sizes S to 3X

Aluminum

### 7021B | Standard Non-Belted



Single D-ring

Sizes UniFit to 2X

Aluminum

### 7035 | Construction Belted



Three D-rings

Sizes XS to 4X

Steel

### 7027 | Retrieval Non-Belted



Three D-rings

Sizes XS to 3X

Steel

### 7021QC | Standard Non-Belted



Single D-ring

Sizes UniFit to 3X

Steel

### 7021 | Standard Non-Belted



Single D-ring

Sizes XS to 4X

Steel

Item #	Sizes	Type	D-rings	Legs	Chest	Torso	Applications
7035B	S, M, L, XL, 2X, 3X	Construction Belted	Dorsal, Hip	Tongue Buckle	Quick Connect Buckle	Aluminum Camlock	Fall Arrest, Work Positioning
7021B	UniFit, XL, 2X	Standard Non-Belted	Dorsal	Tongue Buckle	Quick Connect Buckle	Aluminum Camlock	Fall Arrest
7035	XS, S, M, L, XL, 2X, 3X, 4X	Construction Belted	Dorsal, Hip	Tongue Buckle	Mating Buckle	Steel Spring Tension Roller	Fall Arrest, Work Positioning
7027	XS, UniFit, XL, 2X, 3X	Retrieval Non-Belted	Dorsal, Shoulder	Tongue Buckle	Mating Buckle	Steel Spring Tension Roller	Fall Arrest, Retrieval
7021QC	UniFit, XL, Dual Size 2X/3X	Standard Non-Belted	Dorsal	Quick Connect Buckle	Quick Connect Buckle	Steel Spring Tension Roller	Fall Arrest
7021	XS, UniFit, XL, 2X, 3X, 4X	Standard Non-Belted	Dorsal	Tongue Buckle	Mating Buckle	Steel Spring Tension Roller	Fall Arrest
7021FD	S, M, L, XL	Standard Non-Belted	Dorsal, Sternal	Tongue Buckle	Mating Buckle	Steel Spring Tension Roller	Fall Arrest, Climbing
7021QCFD	S, M, L, XL, 2X,	Standard Non-Belted	Dorsal, Sternal	Quick Connect Buckle	Quick Connect Buckle	Steel Spring Tension Roller	Fall Arrest, Climbing
7028	UniFit, XL, 2X	Cross-Over	Dorsal, Hip	Tongue Buckle	Mating Buckle	Steel Spring Tension Roller	Fall Arrest, Climbing
7028QC	UniFit, XL, 2X	Cross-Over	Dorsal, Hip	Quick Connect Buckle	Quick Connect Buckle	Steel Spring Tension Roller	Fall Arrest, Climbing

UniFit (Small, Medium, Large)

## Tradesman Plus

Tradesman Plus harness incorporate nearly 20 years of end-user acceptance for performance and reliability. Serviceable functionality and trusted quality are enhanced with added features without imposing a premium expense. Integrated dorsal SRL sleeve, Visi-lock Quick-Connect chest buckles, Tri-layer padded shoulder yoke, reinforced waist pad, and low-profile spring-tension torso adjusters are all standard on Tradesman Plus harnesses. All Tradesman Plus harnesses shown are certified to CSA Z259.10-2018 Class A or Class A, P and ANSI Z359.11-2014

### 7006B | Standard Non-Belted



Single D-ring

Sizes S to 2X

### 7078B | Construction Belted



Three D-rings

Sizes S to 2X

### 7008B | Standard Non-Belted



Single D-ring

Sizes XS to 3X

Item #	Sizes	Type	D-rings	Legs	Chest	Torso	Applications
7078B	S/M, L/X, 2X	Construction Belted	Dorsal, Hip	Tongue Buckle	Quick Connect Buckle	Steel Spring Tension Roller	Fall Arrest, Work Positioning
7008B	XS, S/M, L/X, 2X, 3X	Standard Non-Belted	Dorsal	Tongue Buckle	Quick Connect Buckle	Steel Spring Tension Roller	Fall Arrest
7006B	S/M, L/X, 2X	Standard Non-Belted	Dorsal	Mating Buckle	Quick Connect Buckle	Steel Spring Tension Roller	Fall Arrest

S/M, L/X : Dual Size

## CONTRACTOR PLUS and WELDTECH™ // BODY WEAR

Contractor Plus  
and WeldTech™

Reliable performance with economical function, Contractor Plus harnesses provide compliance-grade solutions and practical user productivity for most all common worksite applications. Standard features include our integrated dorsal SRL attachment sleeve, padded air-mesh shoulder yoke, structured waist support positioning pad and low-profile torso adjusters. All Contractor Plus harnesses shown are certified to CSA Z259.10-2018 Class A or Class A, P and ANSI Z359.11-2014

**7073B** | Construction Belted

Three D-rings

Sizes S to 3X

**7016B** | Standard Non-Belted

Single D-ring

Sizes XS to 3X

**7015B** | Standard Non-Belted

Single D-ring

Sizes XS to 3X

**7039** | WeldTech™ Welding Harness

Three D-rings

Sizes UniFit to 2X

WeldTech harnesses shown are certified to CSA Z259.10-2018 and ANSI Z359.11-2014

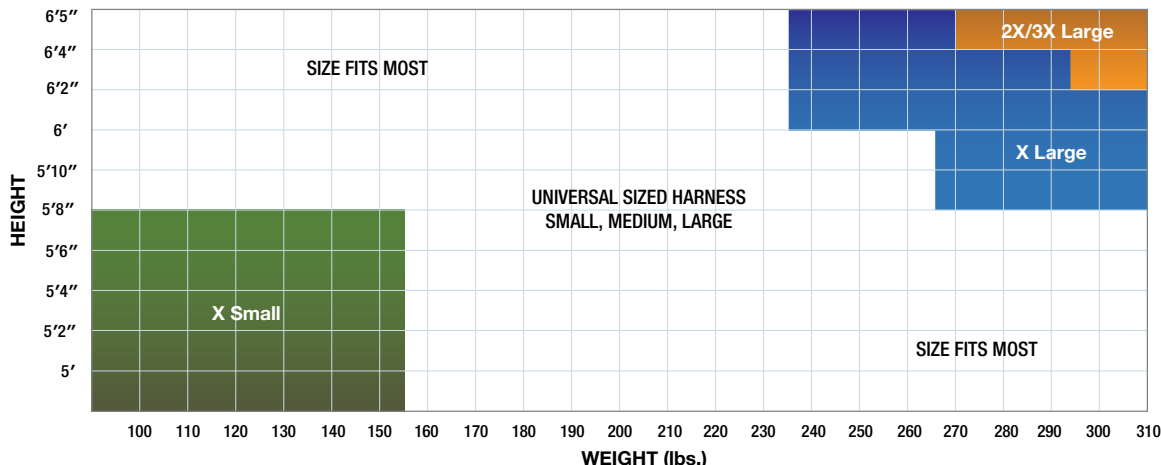
Nomex webbing resists burns caused by slag and spatter common in welding hot work applications

Item #	Sizes	Type	D-rings	Legs	Chest	Torso	Applications
<b>7073B</b>	S/M, L/X, 2X, 3X	Construction Belted	Dorsal, Hip	Tongue Buckle	Mating Buckle	Steel Spring Tension Roller	Fall Arrest, Work Positioning
<b>7016B</b>	XS, S/M, L/X, 2X, 3X	Standard Non-Belted	Dorsal	Tongue Buckle	Mating Buckle	Steel Spring Tension Roller	Fall Arrest
<b>7015B</b>	XS, S/M, L/X, 2X, 3X	Standard Non-Belted	Dorsal	Mating Buckle	Mating Buckle	Steel Spring Tension Roller	Fall Arrest
<b>7039</b>	UniFit, XL, 2X	Standard Non-Belted	Dorsal, Hip	Quick Connect Buckle	Mating Buckle	Steel Friction Roller	Fall Arrest, Work Positioning

UniFit (Small, Medium, Large) S/M, L/X and X/2X: Dual Sizes

### QUICK REFERENCE GUIDE

Please refer to this chart to get a general idea of your FallTech harness size.



### DETAILED REFERENCE GUIDE

Because your harness is the most important element of any personal fall arrest system, it must fit properly to deliver the highest level of safety. After you select your FallTech harness, follow these three simple steps to find your exact size.

#### 1. TORSO STRAP

Single-size Harness

XS	32" - 49"	TB	16" - 28"	MB/QC	14" - 30"
S	38" - 51"	TB	18" - 30"	MB/QC	16" - 32"
M	40" - 53"	TB	20" - 32"	MB/QC	18" - 34"
L	42" - 55"	TB	22" - 34"	MB/QC	20" - 36"
XL	46" - 57"	TB	24" - 36"	MB/QC	22" - 38"
2X	48" - 60"	TB	26" - 38"	MB/QC	24" - 40"
3X	51" - 62"	TB	28" - 40"	MB/QC	26" - 42"
4X	50" - 64"	TB	30" - 42"	MB/QC	28" - 44"

UniFit Harness

UNI	47" - 60"	TB	19" - 31"	MB/QC	17" - 33"
-----	-----------	----	-----------	-------	-----------

Dual-size Harness

S/M	43" - 53"	TB	18" - 30"	MB/QC	16" - 32"
L/XL	45" - 58"	TB	22" - 34"	MB/QC	20" - 36"
XL/2X	49" - 68"	TB	24" - 36"	MB/QC	22" - 38"
2X/3X	51" - 63"	TB	26" - 38"	MB/QC	24" - 40"
3X/4X	52" - 64"	TB	28" - 40"	MB/QC	26" - 42"

TB= Tongue Buckle MB= Mating Buckle QC= Quick Connect Buckle

#### 3. WAIST BELTS

7 Grommet Single-size

XS	30" - 39"
S	34" - 43"
M	38" - 47"
L	42" - 51"
XL	46" - 55"
2X	50" - 59"
3X	54" - 63"
4X	58" - 67"

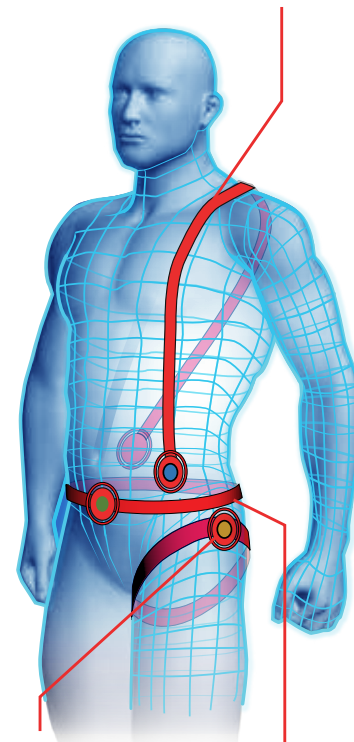
9 Grommet Dual-size

S/M	34" - 47"
L/XL	42" - 55"
XL/2X	46" - 59"
2X/3X	50" - 66"
3X/4X	54" - 70"

ALL MEASUREMENTS ARE TO BE TAKEN OVER CLOTHING

#### 1. TORSO STRAP

Measure from 3 inches left of navel. Upward over left shoulder towards lower right side of back.



#### 2. LEG STRAP

Measure the circumference around the thigh from the crotch to underneath the hip bone.

#### 3. WAIST BELTS

Measure the circumference around the waist just under the navel.



**CREATING A  
SAFER WORK  
ENVIRONMENT**



**ViewPack®** Traditional pack-style energy absorbing lanyards with extraordinary features including our patented ViewPack® cover with inspection window and WrapPack design to fully protect the enclosed product and inspection labels. All are built with abrasion and UV resistant polyester webbing and feature forged alloy steel or aluminum alloy harness and anchorage connectors. All ViewPack® lanyards shown are certified to CSA Z259.11-2017 Class B or Class B, Y

### C8256 | ViewPack® Lanyard

6' Single-Leg

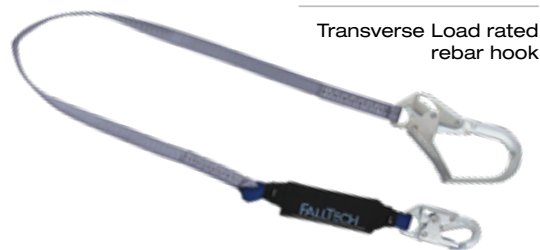


ViewPack® lanyard with polyester web and steel snap hooks for harness and anchorage connection.

C8254: 4' polyester web lanyard.

### C82563 | ViewPack® Lanyard

6' Single-Leg



Transverse Load rated rebar hook

ViewPack® lanyard with polyester web, steel snap hook for harness attachment and steel rebar hook for anchorage connection.

C82543: 4' polyester web lanyard.

### C826073 | ViewPack® Lanyard

6' Double-Leg



Transverse Load rated rebar hooks

100% tie-off lanyard with polyester web, steel snap hook for harness attachment and steel rebar hooks for anchorage connections.

C8260734: 4' 100% tie-off with steel snap and rebar hooks.

C826073A: 6' 100% tie-off lanyard with aluminum snap and rebar connectors.

### C8260732D | ViewPack® Lanyard

6' Double-Leg



Transverse Load rated rebar hooks

100% tie-off Tie-back lanyard with jacketed dual-layer polyester web, steel snap hook for harness attachment and steel rebar hooks with sliding D-rings for tie-back anchorage connections.

### C8257 | ViewPack® Lanyard

Adjustable Single-Leg



Adjustable 4 1/2' to 6' lanyard with jacketed dual-layer polyester web and steel snap hooks for harness and anchorage connection.

### C82562 | ViewPack® Lanyard

6' Single-Leg



Tie-back lanyard with jacketed dual-layer polyester web, steel snap hook for harness attachment and steel snap hook with sliding D-ring for tie-back anchorage connection.

## WELDTECH™ LANYARDS // CONNECTORS

## WeldTech™

WeldTech™ lanyards are specifically designed to provide excellent spatter and burn resistance commonly found in hot work welding applications. All configurations are built with Softpack energy absorbers, alloy steel snap and rebar hooks for harness and anchorage connections and are constructed with Kevlar® leg webbing and Nomex® absorber covers. All WeldTech™ lanyards shown are certified to CSA Z259.11-2017 Class B or Class B, Y

**C8242** | WeldTech™ Soft Pack Lanyard

6' Single-Leg



WeldTech™ Soft Pack lanyard with steel snap hooks for harness and anchorage connection.

**C82423:** 6' single-leg lanyard with steel rebar hook for anchorage connection.

**C8242Y3** | WeldTech™ Soft Pack Lanyard

6' Double-Leg

Transverse Load rated rebar hooks



100% tie-off WeldTech™ Soft Pack lanyard with steel snap hook for harness attachment and steel rebar hooks for anchorage connections.

**C8242Y:** 6' Double-leg lanyard with snap hooks.



## Extenders and Carabiners

FallTech® D-ring extenders provide added length to the Dorsal D-ring for simpler connection or SRLs and energy absorbing lanyards and are available in a wide range of configurations and lengths to accommodate user's specific needs and reach. Our alloy steel carabiners deliver high strength reliability for multi-use multi-purpose connecting of fall arrest components and feature self-closing self-locking gates with 3,600 lbs face and side load strength.

### 8450 | Carabiner

Steel



4" x 2" inside dimensions with 1" gate opening. Certified to CSA Z259.12-2016 Class B and ANSI Z359.12-2019

### 8447 | Carabiner

Steel



8" x 4¼" inside dimensions with 2¼" gate opening. Certified to CSA Z259.12-2016 Class B and ANSI Z359.12-2019

### 5071 | SRL Carabiner

Triple-Lock Steel



3¾" x 1½" inside dimensions with ½" triple-lock gate opening. Includes insert clip for dorsal web and SRL alignment. Certified to CSA Z259.12-2016 Class B and ANSI Z359.12-2019

### 8366 | D-ring Extender

Snap Hook



18" extender features 1" polyester web with steel snap hook and connecting ring. Certified to CSA Z259.11-2017 Class B and ANSI Z359.11-2014

**8202:** 14" D-ring extender.  
**836616:** 16" D-ring extender.  
**836624:** 24" D-ring extender.

### 83662D | Double D-ring Extender

Snap Hook



18" extender with two D-rings for user transition between deceleration devices. Certified to CSA Z259.11-2017 Class B and ANSI Z359.11-2014

### 8366L | D-ring Extender

Choke-Loop



18" extender with 1" polyester web, dorsal choke-loop and steel connecting ring. Certified to CSA Z259.11-2017 Class B and ANSI Z359.11-2014

## Lifelines and Arresters

FallTech® Vertical Lifelines deliver continuous fall protection anchoring for the ascending and descending mobile user. All lifelines include steel thimbles and snap hooks paired with back-spliced trailing ends. All FallTech® lifelines feature 5/8" diameter rope with splice protecting heat-shrink sleeves for guarding against abrasion. All Vertical Lifelines and Fall Arresters shown are certified to CSA Z259.2.5-2017

### C8388 | Fall Arrester

Anti-panic



Hinged trailing fall arrester with Anti-panic and 30" ViewPack® energy absorbing lanyard.

### C8150 | Premium Vertical Lifeline

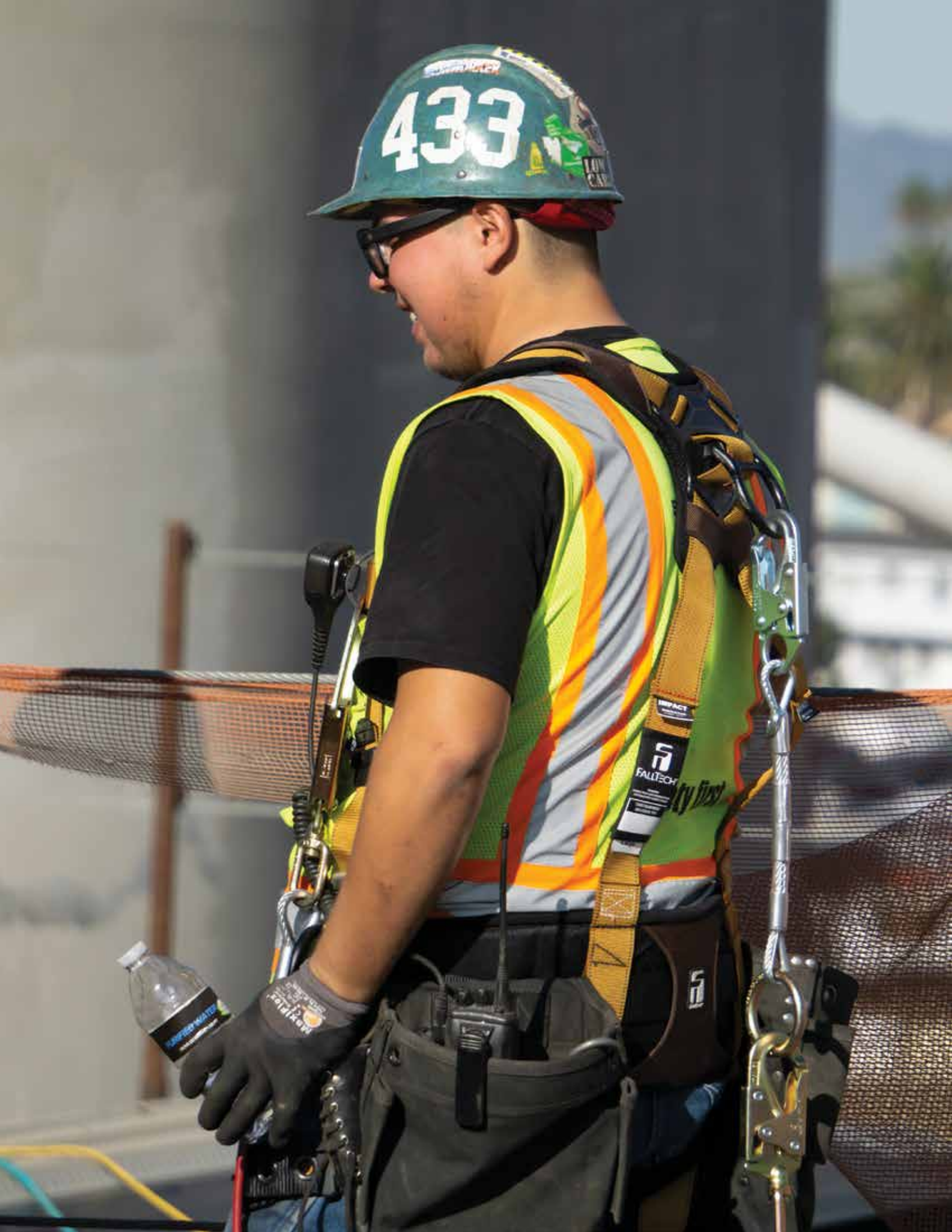
Back-Splice



50' vertical lifeline features low-stretch premium 5/8" 3-strand twisted polyester rope with integral steel thimble and snap hook on the anchoring end and the back-spliced trailing end is ideally suited for replacement with hinged adjusters.

**C8200:** 100' Premium VLL with back-splice.







**PURPOSE-BUILT  
TO EXACTING  
REQUIREMENTS**

## Leading Edge

Contractor Leading Edge SRLs are designed for both below D-ring and overhead applications featuring integrated external energy absorbers, rugged 7/32" galvanized steel cable and load-indicating swivel snap hooks to provide visual fall event indication and help prevent lifeline twisting. The Contractor Leading Edge SRLs shown are certified to CSA Z259.2.2-2017 SRL-LE

### **C727630LE** | Contractor 30' Leading Edge

Galvanized



**C727650LE:** 50' Contractor Leading Edge SRL.

## SELF RETRACTING LIFELINES // DEVICES

**DuraTech®**

DuraTech® SRLs deliver proven performance for reliability that mobile users depend on every day. Built with precision machined aluminum alloy drums and housings, dual internal inertial brake discs, brass pawls, lightweight manganese ratchet centers and aluminum main shafts, DuraTech® SRLs are available with galvanized steel lifelines to fit most all overhead anchorage fall arrest applications. All DuraTech® SRLs shown are certified to CSA Z259.2.2-2017 SRL

**C7268C** | DuraTech® 50' Cable SRL

Galvanized

**C7232C** | DuraTech® 30' Cable SRL

Galvanized

**Contractor**

Dependable functionality without compromise for safety, Contractor series SRLs afford the user with reliable and cost-effective solutions for fall arrest applications. Field-use verified and thoroughly lab tested, Contractor SRLs feature rugged glass-filled nylon housings, internal inertial brake systems, load-indicating swivel snap hooks and anchorage carabiners. All Contractor SRLs shown are certified to CSA Z259.2.2-2017 SRL

**C727630** | Contractor 30' Cable SRL

Galvanized

**C727650** | Contractor 50' Cable SRL

Galvanized





## Personal Mini 6' Web

DuraTech® Mini 6' Web SRLs deliver Fall Arrest performance beyond the capabilities of traditional energy absorbing lanyards. Featuring impact resistant nylon housings, long-wearing Dyneema® web and housing swivel-eyes to reduce lifeline twisting. All DuraTech® Mini SRLs include internal locking pawls and external energy absorbers for deceleration in the event of a fall. Available in single and twin-leg configurations with multiple alloy steel and forged aluminum alloy anchorage and harness-end connector options. DuraTech® Mini's may be anchored up to 5' below the dorsal D-ring for user's weighing up to 310 lbs. max. All DuraTech® Mini SRLs shown are certified to CSA Z259.2.2-2017 SRL

**C72706SB1** | DuraTech® Mini 6' SRL

Single-leg, Steel



**C72706TB3** | DuraTech® Mini 6' SRL

Twin-leg, Steel  
Transverse Load rated  
rebar hooks



### Lifeline Connectors

Housing Connectors	SRL Type	1 - Steel Snap Hook	2 - Steel Swivel Snap Hook	3 - Steel Rebar Hook	4 - Aluminum Snap Hook	5 - Aluminum Rebar Hook	6 - Aluminum Carabiner
A - Swivel-eye	Single-Leg	C72706SA1	-	-	C72706SA4	-	-
B - Steel Carabiner		C72706SB1	C72706SB2	C72706SB3	C72706SB4	C72706SB5	-
G - Aluminum Carabiner		-	-	-	-	C72706SG5	C72706SG6
B - Steel Carabiner/Clip	Twin-leg	C72706TB1	-	C72706TB3	C72706TB4	C72706TB5	C72706TB6

Housing and Lifeline Connectors



**DuraTech®  
Web and Cable**

DuraTech® 10' web and 9' cable SRLs bring the same dependable overhead performance as larger units and provide excellent user mobility for the most demanding jobs. Equipped with internal inertial brakes and locking pawls to support smooth deceleration and positive stopping action and glass-reinforced housings to provide unmatched impact resistance. DuraTech® 10' web SRLs feature abrasion resistant Dyneema® web and are available with multiple alloy steel and forged aluminum alloy connectors. DuraTech® 9' cable SRLs feature a side-outlet housing design and 3/16" galvanized steel cable with matched alloy steel load-indicating swivel connectors. All DuraTech® web and cable SRLs shown are certified to CSA Z259.2.2-2017 SRL

**C82710SC1** | DuraTech® 10' Web SRL

Single-leg, Steel



**C83709SB7** | DuraTech® 9' Cable SRL

Single-leg, Steel



**Lifeline Connectors**

Housing Connectors	1 - Steel Snap Hook	3 - Steel Rebar Hook	4 - Aluminum Snap Hook	5 - Aluminum Rebar Hook	7 - Steel Load-indicating Swivel Snap Hook
B - Steel Carabiner	C82710SC1	C82710SC3	-	-	C83709SB7
G - Aluminum Carabiner	-	-	C82710SG4	C82710SG5	-

Housing and Lifeline Connectors





Discover the full selection of all  
our fall protection products at  
[www.falltech.com](http://www.falltech.com)



**Tel / 800-719-4619**  
**Tel / 323.752.0066**

**Fax / 323.752.5613**

**©2020 Alexander Andrew, Inc**  
**1306 S. Alameda St.**  
**Compton, CA. 90221-4803**

Tools shown not included.

Product description and specifications  
herein may change without notice.

U.S. and International Patents Pending.

Part #480-00023

